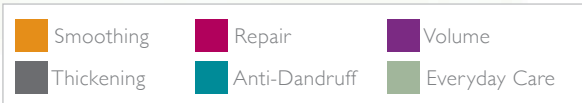


The Satinique® Collection is color-coded to help you identify products perfect for your hair care needs.



SATINIQUE PRODUCT PORTFOLIO

HAIR CONCERN

STEP 1: CARE

Each need-based formula enhances hair with customized care.

Select a shampoo and conditioner based on your hair concern.

DULLNESS, DRYNESS, & FRIZZ

SMOOTH MOISTURE for dry, unruly hair restores lost moisture and improves manageability for silky hair that is up to 6x smoother.



- SHAMPOO 11-0655 11-0656 750 mL
- CONDITIONER 11-0664 11-0665 750 mL

DAMAGE & COLOR FADING

COLOR REPAIR for damaged, color-treated hair provides targeted repair while protecting color vibrancy for up to 45 washes.



- SHAMPOO 11-0663 11-4948 750 mL
- CONDITIONER 11-0671 11-4949 750 mL

FLATNESS & LIFELESSNESS

EXTRA VOLUME for fine, flat hair adds 37% more body and volume for long-lasting fullness.



- SHAMPOO 11-0657 11-4944 750 mL
- CONDITIONER 11-0667 11-4945 750 mL

HAIR LOSS & THINNING

ANTI-HAIRFALL for fragile, thinning hair helps prevent hair loss due to breakage for thicker, fuller-looking hair, saving 1,800 strands of hair per month.



- SHAMPOO 11-0659
- CONDITIONER 11-6823

UNBALANCED SCALP & IRRITATION

ANTI-DANDRUFF for dry, irritated scalp controls dandruff and reduces itching for a healthy scalp.



- SHAMPOO 11-0670

DAILY CLEANSING

2 IN 1 for all hair types cleanses and conditions in one step for shiny, healthy-looking hair.



- SHAMPOO & CONDITIONER 11-5304 11-6510 750 mL

STEP 2: TREAT

Treatments address multiple concerns, from repairing hair from past damage to improving scalp nourishment.

Select one or more treatments, depending on your hair needs.

USE: DAILY



- SCALP TONIC** for scalp health restores moisture and nutrients to help maintain scalp nourishment. Use morning and night every day.
If you like Nioxin Scalp Tonic, try this.
11-0686

USE: DAILY



- OVERNIGHT REPAIR TREATMENT** for split-end repair mends split ends and resurfaces the cuticle to resist damage while you rest. No need to wash your hair in the morning; just style and go.
If you like Redken Real Control Overnight Treatment, try this.
11-0677

USE: DAILY



- DUAL DEFEND SPRAY** for thermal and environmental protection helps prevent damage from environmental stresses and heat styling.
If you like Kao Liese Hair Cocktail, try this.
11-0684

USE: 2-3 TIMES A WEEK



- REVITALIZING MASK** for damaged, color-treated hair provides deep nourishment to distressed hair for stronger, healthier-looking strands.
11-9593

STEP 3: STYLE

Styling products are designed to help enhance your own natural style or change it effortlessly.

Start with VOLUME, select one product to SHAPE, another to HOLD, and finish with SHINE.

VOLUME



- VOLUMISING MOUSSE** for fine, flat hair boosts volume at the root for nonstop fullness.
If you like Tresemmé 24-Hour Body, try this.
11-9542

SHAPE



- STRAIGHTENING BALM** for dry, unruly hair provides long-lasting smoothness with radiant shine.
If you like Redken Align, try this.
11-0676



- STYLING CREAM** for defined curls smoothes and shapes curls for increased manageability and control.
If you like Bumble and Bumble Curl Conscious Defining Creme, try this.
11-4954

HOLD



- FINAL STEP FINISHING SPRAY** helps maintain your look with lasting yet flexible medium hold.
If you like Tresemmé Tres Two Spray, try this.
11-6822



- TEXTURING MATTE WAX** for medium hold and definition; forms and molds hair for a look that lasts.
If you like Redken for Men Water Wax, try this.
11-0675

SHINE



- SHINE SPRAY** amplifies radiant shine daily, enhancing hair color's natural brilliance.
If you like Moroccanoil Glimmer Shine, try this.
11-0685